



Strategic Plan

Strategic Goals and Annual Plan



St Anne's Catholic School recognizes the Government's National Education and Learning Priorities:

- Learners at the centre - 1.1 School is Safe, 1.2 High aspirations
- Barrier-free access - 2.3 Reduce Barriers, 2.4 Foundational Skills
- Quality teaching and leadership - 3.5 Te Ao Māori, 3.6 Strengthening Teaching/PLD
- Future of learning and work - 4.7 Community Collaboration

St Anne's Catholic School will integrate the National Educational Goals and National Education Learning Priorities at Governance and Operational levels by giving them full consideration when planning school developments or school/class programmes. Literacy (10 hours/week) and numeracy (5 hours/week) will be recognized as curriculum priorities in years 1-8. Achievement results are analyzed throughout each year to identify students achievement progress and / or students or groups of students at risk. Planning ensures that strategies are employed to improve achievement outcomes with emphasis on giving effect to Te Tiriti o Waitangi.

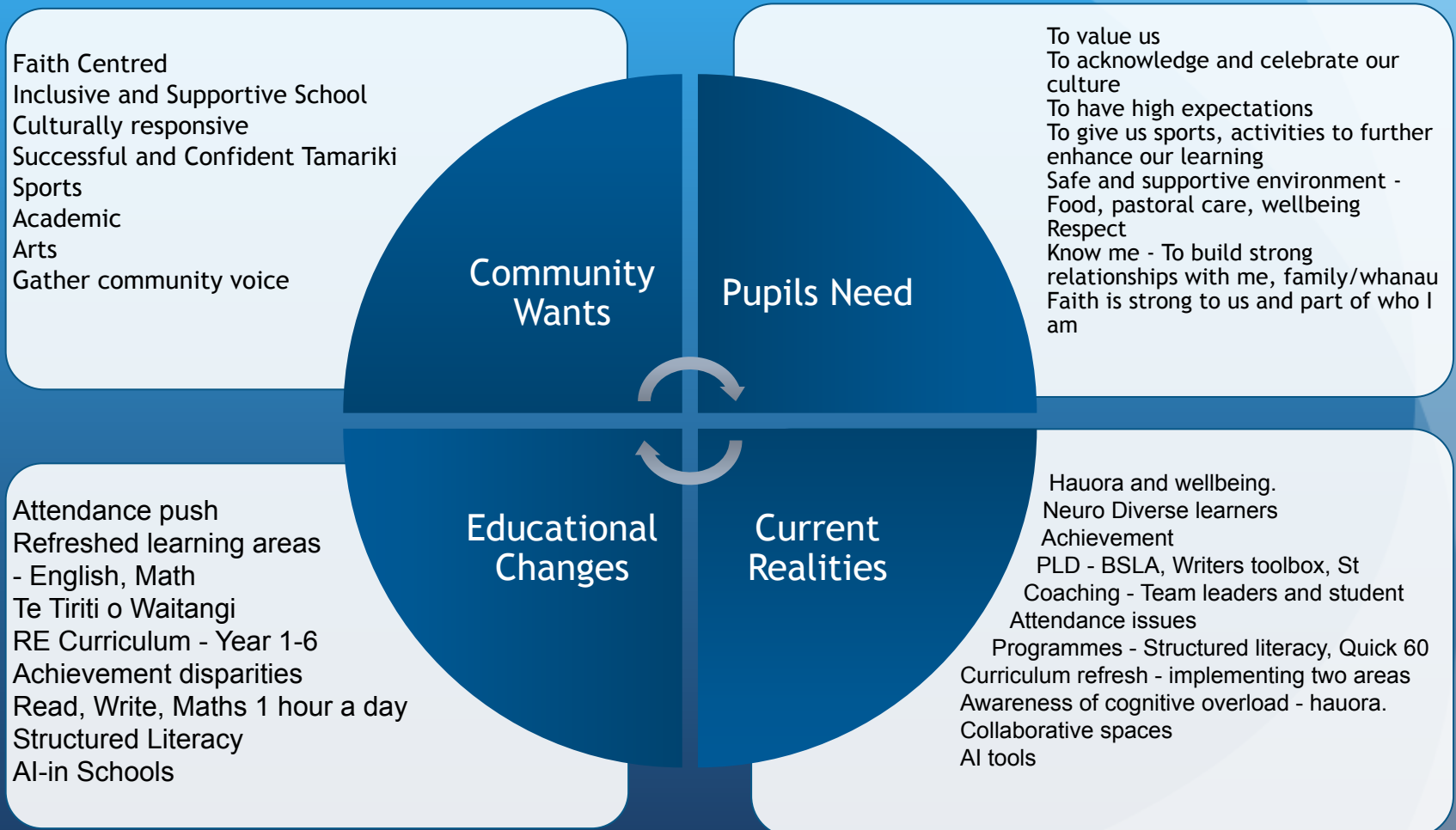
Strategic Plan

The Board has accepted this Strategic Plan as its undertaking to the Ministry of Education and in accordance with the Private Schools Integration Act (1975) and the Integration Agreement of the school - The school will provide Religious Education. The school recognises the rights of the proprietor to supervise the maintenance and preservation of the Special Character, and the right of the proprietor to determine from time to time what is necessary to preserve and safeguard the Special Character of the education provided. This Strategic Plan will be annually updated in December each year.

Consultation Process

The BOT will document and maintain an ongoing reporting, self review and community consultation over a 3 year period. Reports from the reviews will form the basis for priorities for school development and improvement. This will involve communication and consultation with caregivers, staff and stakeholders in respect to the Strategic plan, Annual planning and student achievement targets.

What's Shaping Our School



St Anne's Catholic School

Vision *Learn to Love, Love to Learn, Akona te Aroha, Arohaina te ako*

Mission *We encourage our children to achieve their full potential, by providing high quality learning programmes, permeated by the special character of St Anne's Catholic School.*

Values *Aroha-Love, Tika-Justice, Whakanui-Respect, Arohanui-Compassion & Tūmanako-Hope*



Strategic Goal 1: Faith Centred Community

To grow an environment where our Gospel Values, charism and cultural identity are lived.

Giving Effect to Te Tiriti o Waitangi: Ka Hikitia, The Poutama Reo Framework, Te whare tapa wha

Action 1.1

Ensuring Catholic Special Character that is essential to who we are

1.1.1 Strengthen and enhance our Catholic Special Character through faith formation and values (1.2, 3.6)

Measure of Success: *Complete RE Internal Review recommendations*

1.1.2 Implement the new Religious Education curriculum to enrich faith-based learning and student engagement (3.6)

Measure of Success: *Staff self review survey*

Action 1.2

Creating a school culture that values individuals - hauora, culture and identity

1.2.1 Promote holistic well-being (hauora) for all learners and staff, ensuring they feel valued, engaged, and connected through a shared purpose and recognition of their unique identities. (1.1, 3.5, Kahui Ako Goal 1)

Measure of Success: *Hauora Survey*

1.2.2 Improve attendance and engagement by implementing the STAR framework, ensuring a supportive, targeted, and responsive approach to learner success (1.1, 1.2, 2.3, 2.4)

Measure of Success: *Meet MOE Attendance targets*

Strategic Goal 2: Building Capability

We aim to increase impactful teaching practice, based on effective learning strategies and positive relational interactions

Giving Effect to Te Tiriti o Waitangi: Ka Hikitia, The Poutama Reo Framework

Action 2.1

Embed impactful teaching practice

2.1.1 Enhance and strengthen the key components of Student Agency pedagogy to empower learners with greater ownership of their learning (1.2, 2.3, 3.6, Kahui Ako Goal 3)

Measure of Success: *Kahui Ako self evaluation matrix (staff, students)*

2.1.2 Review and integrate the revised Mathematics and Writing learning areas into the school's curriculum and systems to enhance student achievement (1.2, 3.6, 4.7)

Measurement of Success: *Learning Area Organisation*

Action 2.2

Strengthen partnerships and enhance Māori language and pedagogy.

2.2.1 To improve confidence and capability in te reo Māori, tikanga, mātauranga Māori and capability in teaching and learning (3.5, 4.7)

Measure of Success: *Staff self review survey.*

2.2.2 Further strengthen partnerships with whānau through effective communication, meaningful opportunities, and valued contributions. (2.4, 4.7)

Measure of Success: *Whānau feedback*

Strategic Goal 3: Responsive Curriculum

Provide our pupils an authentic and responsive curriculum.

Giving Effect to Te Tiriti o Waitangi: Ka Hikitia, The Poutama Reo Framework

Action 3.1

Accelerating student achievement in literacy and numeracy

3.1.1 Review and refine schoolwide assessment practices, ensuring consistent implementation and effective analysis for improved learner outcomes - *STAR, PAT, Easttle, BSLA* (1.12, 2.3, 2.4, 3.6)

Measure of Success: *Assessment overview*

3.1.2 Provide accelerated achievement pathways for our Targeted learners: *Structured Literacy Approach (Rita), Quick60, Team strategic pupil focus days* (1.2, 2.3, 3.6)

Measure of Success: *Strategic pupil acceleration*

Action 3.2

Providing a high quality and engaging curriculum

3.2.1 Implement a structured Literacy approach for Years 0-6 to enhance foundational skills and learning outcomes - *BSLA, Writer's Toolbox* (2.3, 2.4, 3.5, 3.6)

Measure of Success: *Target of Writing 80%, Reading 80%*

3.2.2 Develop and implement a maths program that fosters deep understanding and achievement - *MOE Maths Resources* (1.2, 2.3, 2.4, 3.6)

Measure of Success: *Target of Maths 80%*

Measurement of Success:

	2024	2025	2026
Reading at or above the expected curriculum level	77%	80%	85%
Writing at or above the expected curriculum level	79%	80%	85%
Mathematics at or above the expected curriculum level	77%	80%	85%

School Achievement Target:

Annual Target: Mathematics

The 74 Students (2024) who had not yet reached their expected curriculum level will meet or exceed the expected curriculum level in Maths by the end of 2025.

Annual Target: Reading

The 67 students (2024) who had not yet reached their expected curriculum level, will meet or exceed the expected curriculum level in Reading by the end of 2025.

Annual Target: Writing

The 51 students (2024) who had not yet reached their expected curriculum level, will meet or exceed the expected curriculum level in Writing by the end of 2025.

Keeping the Strategic Focus

